

TECH INNOVATION  
FROM CES 2019



DISPLAY MAKERS  
SHOWCASE 4K & 8K



CTA NAMES  
INTEGRATOR OF THE YEAR

# CEPro

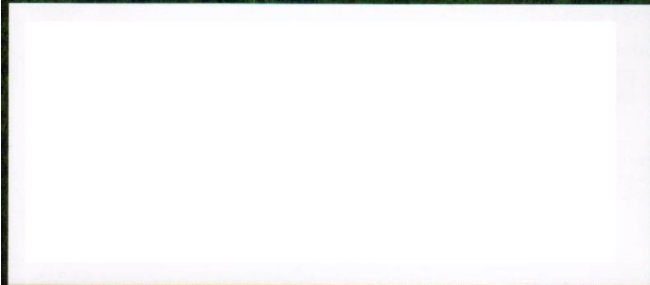
MARCH 2019  
CEPRO.COM

INTEGRATION  
AUDIO/VIDEO  
NETWORKING  
CONTROL  
BUSINESS



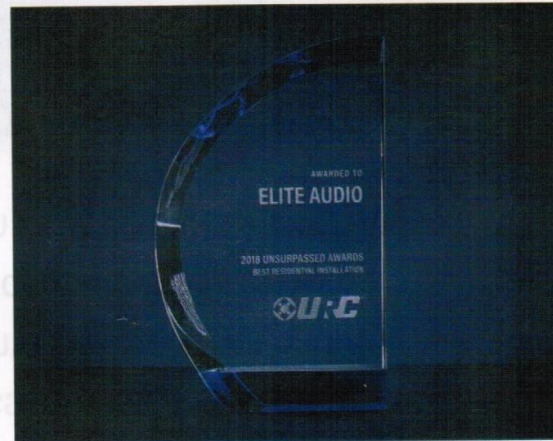
## Homes, Sweet Homes!

Mark of Excellence Awards spotlight  
168 projects and products. PAGE 26



**CE PRO ANNUAL  
BUYER'S GUIDE:**  
1,000+ SUPPLIERS  
& 42 PRODUCT  
CATEGORIES

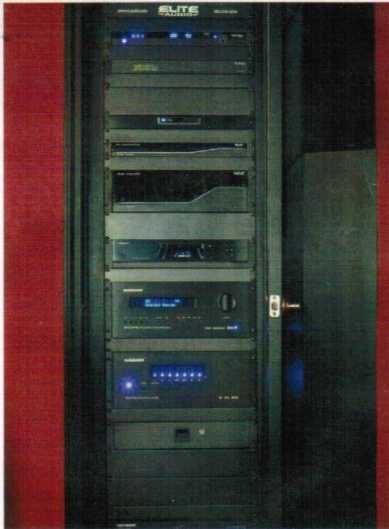
# NEAT-O!



PHOTOS COURTESY ELITE AUDIO

## URC 2018 UNSURPASSED AWARDS – BEST RESIDENTIAL INSTALLATION

Systems Design & Installation by Elite Audio, Lexington, S.C.



### Winning Solution for Expanded Retrofit Project

This innovative project was recognized by control and automation manufacturer URC in its annual Unsurpassed Awards program and involved a slick retrofit solution by Elite Audio. The project began as a basic six-zone installation that was later replaced with a URC Total Control system and expanded to what is now a 24-zone distributed audio system with an additional six surround-sound zones, explains Elite Audio's Brantley Waites. "URC Total Control was a perfect solution because of its network-based connectivity," he says. The system expanded because the main home was added onto and a detached building was built beside the residence to include a workshop, storage and gym, Waites says. As the system swelled from the original six zones it created installation and wiring limitations during the retrofit, which resulted in the implementation of multiple equipment locations.

### Cabling Challenges Overcome Integrating New Spaces

There are several "simple local equipment areas," as Waites describes them, but there are also three complete A/V racks located throughout the home and one in a detached building where entertainment was distributed. "There were many challenges based on the various construction phases and how to integrate into the new spaces with several subsystems," Waites notes. "Routing cable was a big challenge in some areas, and we connected the detached building to the main home with fiber only. There was no copper pulled between the two structures." Beyond distributed and surround-sound audio systems, the project includes fully automated lighting control of the home and detached building, 32 channels of Luma IP video surveillance cameras, home theater system, plus an outdoor entertainment system. Besides the URC-backed automation and variety of URC controllers, equipment for the extensive project includes a host of SnapAV brands: Araknis for network switches, Binary MoIP video distribution, Strong 21U and 42U racks, Wattbox surge protection and Episode speakers.



### Rear Projection & Super-Wide Viewing for Super Fun

The homeowner's favorite technology areas are the home theater and outdoor theater, and it's easy to see why. Though the main video distribution system features 10 televisions, including a mirror TV, the theater spaces are particularly impressive and immersive thanks to the combination of Epson projectors and Stewart Filmscreen projection screens — but not just your run-of-the-mill screen setups. The 133-inch Stewart screen in the theater is CinemaScope aspect ratio mated to an Epson that's

outfitted with a Panamorph lens to produce the super-wide images (plus Aerial Acoustics and JL Audio speakers driven by AudioControl amplification and processing). The basement/outdoor viewing comes via a 92-inch StarGlas rear-projection Stewart model whose sleek façade really just makes it look like a huge picture window — with content fed by a Sony Blu-ray player, DirecTV and the MoIP distribution.



**WE'RE LOOKING FOR OVER-THE-TOP PROJECTS. COOL, UNIQUE, TIDY OR METICULOUS, SHARE YOUR BEST WORK WITH OUR READERS. E-MAIL YOUR SUBMISSIONS, WITH HIGH-RESOLUTION IMAGES, TO MANAGING EDITOR, ARLEN SCHWEIGER AT [ARLEN.SCHWEIGER@EMERALDEXPO.COM](mailto:ARLEN.SCHWEIGER@EMERALDEXPO.COM).**